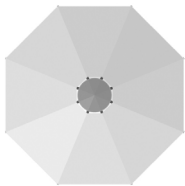


TRIUMPH FREESTANDING UMBRELLA GIANT PULLEY LIFT

Triumph is the flagship center post umbrella for all luxury resorts, hotels, and high-end outdoor living spaces. Built with durable, commercial-quality materials, the Triumph giant umbrella offers freestanding maximum shade options on a larger 2" center post. It has three canopy size options to accommodate any outdoor space.



- Smooth and effortless kernmantle rope double pulley system
- A 2" diameter, 3.2 mm thick single-piece aluminum center pole provides incredible strength and durability
- Ergonomically designed, 3/4" diameter fiberglass ribs maintain shape and provide added strength
- High-impact polymer joints help create a durable canopy frame
- Engineered to withstand 35 mph sustained winds
- Mounting options include permanent, semi-permanent, and freestanding bases for installation on any surface
- Stainless steel hardware throughout



13' OCTAGON

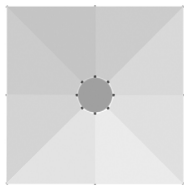
U 880FM - 47 lbs

A - Overall Height: 112.5"

B - Open Clearance: 87"

C - Closed Clearance: 30.5"

Mast Diameter: 2"



10' SQUARE

U 883FM-SQ - 43 lbs

A - Overall Height: 112.5"

B - Open Clearance: 85.5"

C - Closed Clearance: 28"

Mast Diameter: 2"



8.5' x 11' RECTANGLE

U 882FM-R - 44 lbs

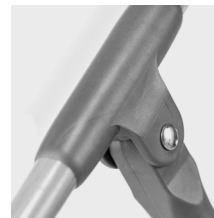
A - Overall Height: 112.5"

B - Open Clearance: 85.5"

C - Closed Clearance: 27"

Mast Diameter: 2"

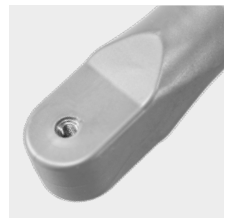
PRODUCT FEATURES



HIGH-IMPACT POLYMER JOINTS



DOUBLE PULLEY SYSTEM



3/4" THICK FIBERGLASS RIBS

Note: Not intended for use with tables featuring umbrella holes. Umbrella clearance dimensions are measured while not mounted in a base. Depending on the selected base, these clearance measurements will change. All dimensions have a +/-6" tolerance based on the pitch angle of the umbrella rib. This is due to multiple variables: pin placement height, crank tautness, and fabric weight.

AVAILABLE BASE OPTIONS

Note: The stackable steel plate bases are galvanized steel, the direct mount stem is stainless steel, the heavy-duty wheel base is brushed silver, and the premium aluminum base is silver mist.



DIRECT MOUNT STEM

18ST2 - 5 lbs

H: 18" W: 2" D: 2"

Can be mounted to concrete, wood deck, or any stable solid surface. Hardware not included.



HEAVY-DUTY WHEEL BASE

ARU-480 - 94 lbs

H: 11" W: 34" D: 34"

Residential use only, Pavers not included. Twelve 16" x 16" pavers are needed to properly weight the base to 480 lbs.



STACKABLE STEEL PLATE BASE

36G-18ST2 - 150 lbs

H: .5" W: 36" D: 36"

Can be stacked up to three plates, 2" x 18" stem included.

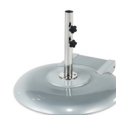


STACKABLE STEEL PLATE BASE

36G-SQ-18ST2 - 200 lbs

H: .5" W: 36" D: 36"

Can be stacked up to three plates, 2" x 18" stem included.



PREMIUM ALUMINUM BASE (with Wheels)

150A-18ST2 - 150 lbs

H: 3.5" W: 30" D: 30"

Concrete-filled, 2" x 18" stem included.



Available in: **U** Umbrella